

Haciendas

Home Building

Santa Fe Style

A PARADE OF HOMES



Learn
'HOW TO PARADE'
in 2022

In home tech drives the EV revolution

PAGE 28

A new crop of Parade entrants vie to be No. 1

PAGE 48

Tierra Concepts' Grand Hacienda Winner Amazes

PAGE 18





JOINING THE PIECES:

**Reimagining a
disjointed compound into
a seamless masterpiece**

2021 GRAND HACIENDA
AWARD WINNER

By: Elayne Smith Lowe

Photos: Wendy McEahern (c)

It started small, like many adobe homes around Santa Fe. With time, it grew. Different decades wove different fixtures and finishes into its patchwork, competing for dominance across 10,008 square feet.

Yet still, it was unfinished. Still, it was not the house it could be.

Tierra Concepts, Inc. won the 2021 Grand Hacienda Award for its reinvention of a disjointed compound into a cohesive masterpiece. The home showcases the craftsmanship and coordination that goes into harmonizing details and breathing life into an idea.

"This is an example of bringing the homeowner's vision to fruition," said Kurt Faust, co-founder and builder for Tierra Concepts. "Our best homes we ever do is when you have a courageous owner who's not afraid to take risks."



Originally built as a small adobe home, the house had at least two remodels, then sat empty for several years before Faust and his team stepped inside. The house was built in 1960, according to the property description from the Office of the Santa Fe County Assessor. Previous owners added on to the original structure in the 1970s or 1980s, then again sometime in the 1990s, Faust said.

With each new owner and addition, the floorplan expanded, housing new ideas and features that felt cobbled together. With such an array, Faust said it took a lot of vision and creativity from the owners and project team alike to realize the remodel.



"The old house had way too much variety," he said. "Everywhere you turned, you were overwhelmed by the variety of disparate elements."

The remodel was intended to create a tranquil atmosphere. A reimagined floor plan involved moving the kitchen and master bedroom to enhance the charm and personality of the space.

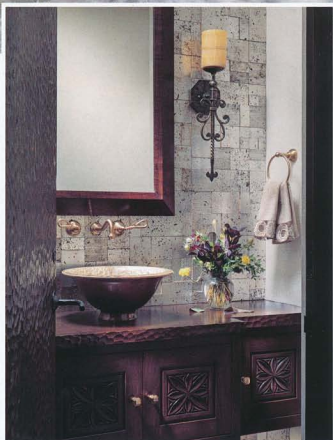
The home boasts five bedrooms, 11 fireplaces, a dry and wet bar, a caterer's kitchen and about 5,000 square feet of wraparound

"The old house had way too much variety."

portals. It sits tucked away on 2.8 acres on the outskirts of Santa Fe, with views of the city and the Sangre de Cristo mountains.

Subtle, neutral walls reflect natural light from the many windows and tie rooms together as dark hardwood floors invite people into separate areas for entertaining and relaxing. The doors — many works of art themselves — open into spaces adorned with hand-forged Mexican chandeliers and sconces.

Throughout the home, modern updates blend with carved vigas,



arched openings, hand-painted tiles, engraved doors and sculpted ironwork. Some of these updates were house-wide, such as the new electrical system. Others manifested in small details, such as the light-up stone bar or additional ironwork from the original artist.

Tierra Concepts reworked former bedrooms to create his and her bathrooms featuring a step-in shower in one and a standalone tub in the other, feeling more like a spa than a simple bath.

"Everything in that house is sumptuous," said Saguna Severson, Tierra Concepts marketing director. "It's such a beautiful



interpretation of Santa Fe style."

Ultimately, the interpretation and execution of this home's transformation landed Tierra Concepts an unprecedented seventh Grand Hacienda Award.

"It doesn't matter where you are in the home, you just know you're in Santa Fe," said Santa Fe Home Builders Association Executive Officer Miles Conway. "[Tierra Concepts] were really able to unify the home and abide by the original spirit of the house."

Conway said as many people live in these adobe houses that started as 200 square-foot dwellings and find themselves questioning floor plans that expanded out

**"It doesn't matter where you are
in the home, you just know
you're in Santa Fe."**

of independent needs rather than an overall vision, this type of transformation and unification may become more common.

"We can do so much if we can transform these historic homes to serve our modern needs," he said.

Severson said part of Tierra Concepts' Grand Hacienda success can be attributed to their innovative mindset.

"It speaks to that we never really stay the same and we keep pushing the Santa Fe style," she said.

This is possible because the whole team is artistic and attentive to details, Faust said, which has enabled them to succeed and not just win awards but to realize the visions of homeowners.

"We love to make beautiful things," Faust said. "We are craftsmen. Doing well runs through everything we do."





It Takes a Community to Raise a Phoenix

AN ESSAY ON THE PROSPECTS OF REBIRTH FROM NEW MEXICO'S WILDFIRE SEASON

By Rachel Wood, Marie Rodríguez, Miles D. Conway, Mikahla Beutler
Photos: Jim Weber

At this moment, as communities reel from the trauma and devastation wrought by the Hermit's Peak/Calf Canyon fires, bold moves can be made to set the stage for healing and a chance to rebuild in a meaningful way by reclaiming trees from the burn scars of Northern New Mexico and using them to rebuild our communities.

New Mexicans and anyone holding a deep love of nature's beauty have colossal reasons to mourn. Well more than 300,000 acres have burned, turning verdant lands into moonscapes and setting the stage for a long-term ecolog-

ical recovery that includes the psychic scars of those who call the region home.

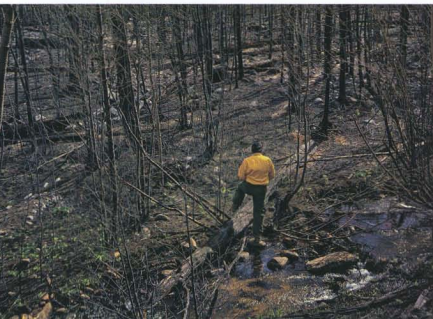
But those trees' sacrifice need not be wasted. With will, creativity and community buy-in, burned trees can be harvested and processed locally into vigas, latillas and other milled lumber to be used by the community for rebuilding and recovery.

To be sure, most burned trees need to remain in the forest providing nutrients for environmental recovery as they break down and compost the forest floor. Yet countless trees must be removed for safety reasons, which provides an opportunity to gather what has grown, developed and burned locally.

Already we are seeing elected officials moving quickly, making firewood available to nearby communities. The Forest Service is expected to move quickly to implement a Burned Area Emergency Response. Boiled down, the response will hire a contractor to remove all of the burned, dead or badly damaged hazard trees within a certain distance of roadways.

Truckloads will be sold at auction. With so much federal money made available and a commitment from the U.S. government to rebuild communities, it is within the realm of possibility that all usable wood that is necessary to remove from the forests could be made available as usable lumber to fire-impacted families.

New Mexico lumber mills stand ready. Santa Fe Area Home Builders Association member, Mammoth Mill





ELEGANT MANHATTAN PENTHOUSE MEETS SANTA FE STYLE

HOME FEATURES

- Infinity fountain water feature
- Meticulously orchestrated entry sequence
- Floating black marble wall in great room
- Custom fireplace and TV Screen
- Marble as you have never seen it before
- Outdoor living area overlooking the Las Campanas fourth Fairway and the Sangre de Cristo Mountains
- Lot Size: 3.01 acres
- Heated Square Feet: 4,064
- Total Square Feet: 5,220
- Designer: John Harvey and Tierra Concepts Designer/Builder
- Interior Designer: Shelley Phelan
- Landscape Architect: Serquis & Associates

11

Each year Tierra Concepts outdoes itself with its Parade of Homes entry. Last year, Tierra Concepts won the Grand Hacienda for a classic Santa Fe style home. This year Tierra Concepts once again offers a truly unique twist with a Las Campanas showpiece. This home marries the elegant sensibilities of a Manhattan penthouse with the earthy elements of Santa Fe style. Upon entering the home through a pivoting metal and glass door, you are led into a high-ceilinged glass hallway, which is the main axis of the house – a Grand Gallery. Ahead is the great room, which incorporates the living-and-dining areas with a sleek, modern kitchen. Whitewashed Douglas Fir beams and high ceilings complement the home's clean lines while accentuating a modern design sensibility rooted in Santa Fe style. Large metal and glass multi-slide pocket doors open onto the outdoor terrace. This home exudes an immediate feeling of both elegance and relaxation, with its grand living areas and cozy private areas.

ABOUT THE BUILDER: Tierra Concepts has won the prestigious Grand Hacienda award an unprecedented seven times, as well as awards for Best of Show, Best Design, Best Floor Plan, Best Kitchen and Best Outdoor Living Space. We are known for our unparalleled experience and creativity: 30 years of crafting Santa Fe's most inspiring homes. Our passion is designing and building quality homes that embody our clients' individuality and vision.

PICTURED: Eric, Keith and Kurt

VISIT: tierraconceptssantafe.com

PHOTOS BY: Wendy McEahern



Tierra Concepts
AWARD WINNING DESIGNER | BUILDER INC.